

# CERTIFICATE OF LOCATION OF GOVERNMENT CORNER

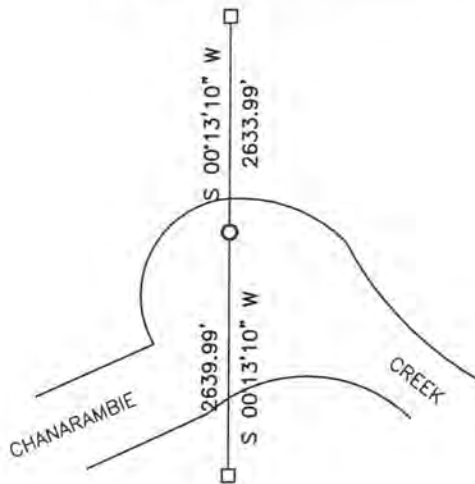
EAST QUARTER Corner of Section 9, Township 105, Range 43, 5TH P.M.

STATE OF MINNESOTA, County of MURRAY

At the corner location shown on the sketch:

- On \_\_\_\_\_ found a \_\_\_\_\_  
DATE
- left monument as found,  lowered monument,  removed monument (explain)
- On 5/15/14 placed nothing, in river.  
DATE

### SKETCH OF REFERENCE TIES



Minnesota State Plane Coordinate System Murray County Datum NAD83 (1996)

NO TIES

N: 124169.517  
 E: 437449.271

Statement of evidence relative to this corner location is on back of page.

I hereby certify that this document and the data contained herein was prepared by me or under my direct supervision.

*David Smith* 1/14/15  
SIGNATURE DATE

Registration No. 43844

- Land Surveyor,  Professional Engineer  
 County Surveyor,  County Engineer

OFFICE OF THE COUNTY RECORDER

County of \_\_\_\_\_

I hereby certify that this document was filed in the Co. Recorders office at \_\_\_\_\_ .M on the \_\_\_\_\_ day of FEB 20 2015 A.D. 20 \_\_\_\_\_

County Recorder *Guelyn C. Larson*

By \_\_\_\_\_, Deputy

DOCUMENT NO. \_\_\_\_\_

## Statement of Evidence

In 1866, J. W. Bishop did the original subdivision of the township.

In 1913, J. W. Woolstencroft shows the corner midway and on line and in the creek.

On May 15, 2014, Bueltel-Moseng Land Surveying established the corner midway and on line. It is in the river.